

idmc<sup>®</sup>  
BUILDING



# CONTENTS

**04**

ABOUT IDMC

**05**

CONNECTIVITY

**07**

KEY FEATURES

**10**

PROJECT OVERVIEW

10 IDMC Duy Tan

16 IDMC My Dinh 1

19 IDMC My Dinh 2

25 IDMC Lang Ha

30 IDMC Tay Ho

34 IDMC Hoan Kiem

**39**

ABOUT DEVELOPER

**40**

LEASING INFORMATION



## ABOUT IDMC

Developments by IDMC stand out in Ha Noi's office market thanks to their strategic locations in Hoan Kiem, Cau Giay, Dong Da, Tay Ho, and Nam Tu Liem. The properties provide occupiers with convenient access to key business hubs.

With high-quality services, modern offices, and comprehensive amenities such as hotels, F&B options, and other conveniences, IDMC developments deliver productive work environments for diverse occupiers from fields like ICT and finance, insurance, and real estate.



# IDMC OFFICE MAP

The IDMC office building system is located in prime locations in areas with highly developed transportation infrastructure, providing easy connectivity to major arteries such as Ring Road 2, Ring Road 3, and urban railway lines.



**IDMC Duy Tan**  
21 Duy Tan, Dich Vong Hau Ward,  
Cau Giay District, Ha Noi



**IDMC My Dinh 1**  
15 Pham Hung, My Dinh Ward,  
Nam Tu Liem District, Ha Noi



**IDMC My Dinh 2**  
18 Ton That Thuyet, My Dinh Ward,  
Nam Tu Liem District, Ha Noi



**IDMC Lang Ha**  
105 Lang Ha, Lang Ha Ward,  
Dong Da District, Ha Noi



**IDMC Tay Ho**  
705 Lac Long Quan, Phu Thuong Ward,  
Tay Ho District, Ha Noi



**IDMC Hoan Kiem**  
3A Phan Dinh Phung, Hang Ma Ward,  
Hoan Kiem District, Ha Noi



# KEY FEATURES

## SMART OFFICES

Double-layered Low-E glass regulates temperatures and optimises energy use.

High-quality sound systems help create a pleasant atmosphere in the workplace.

Air Aroma scenting system allows occupiers to showcase their brand identity with custom scents. These scents have also been proven to benefit performance, productivity, and health.

Daikin VRV systems optimise energy efficiency, resulting in lower energy consumption and reduced operating costs.

Exquisite interior and exterior designs by CPG Singapore and Baumschlager Eberle Asean.

## PRIME LOCATION

Positioned well within vibrant economic hubs.

## INTEGRATED MANAGEMENT SYSTEM

The IDMC Building Cares app streamlines services and empowers tenants to interact with the property management team.

KEY FEATURES





## TOP-TIER PARTNERS

Service partners: Pan Services, Rentokil Initial, BE, CPG.



PAN SERVICES

Rentokil  
Initial

be  
baumschlager eberle  
architekten



CPG  
CORPORATION

Occupiers: Vietcombank, NNR, Bestme, VMO, Ingenico, Paldo, Hitachi, HSBC.

Vietcombank

NNR

bestme  
Beauty & Healthcare Expert

VMO

ingenico  
aWorldlinebrand

paldo  
Fun&Yum

HITACHI  
Inspire the Next

HSBC



# REIMAGINING MODERN OFFICE SPACES

IDMC BUILDING



# idmc | DUY TAN

IDMC Duy Tan is at the heart of the vibrant ICT hub in Cau Giay, where leading companies such as Viettel Group, FPT Software and CMC Global have their headquarters. This strategic location provides occupiers with a favourable business environment and opportunities for collaboration.

## BUILDING SPECIFICATIONS

NLA	655 sq m/floor
LEVELS	8
CEILING HEIGHT	2.7 m
LIFTS	5 high-speed Mitsubishi lifts 1 service lift
BASEMENT LEVELS (PARKING)	3
FIRE SAFETY	Qualified

VRV SYSTEM	VRV Daikin Center with Inverter technology
LIGHTING SYSTEM	Philips LED Panel
FACADE GLASS	Double-layered Low-E
BUILDING MANAGEMENT SYSTEM	BMS
BACK-UP POWER	100%





PHẠM HÙNG  
10m









## AMENITIES

- ◆ Day Maker coffee shop chain
- ◆ Fine-dining restaurants
- ◆ Indoor saltwater swimming pool
- ◆ Fitness centre
- ◆ Sauna room




# CONNECTIVITY

## WALKING

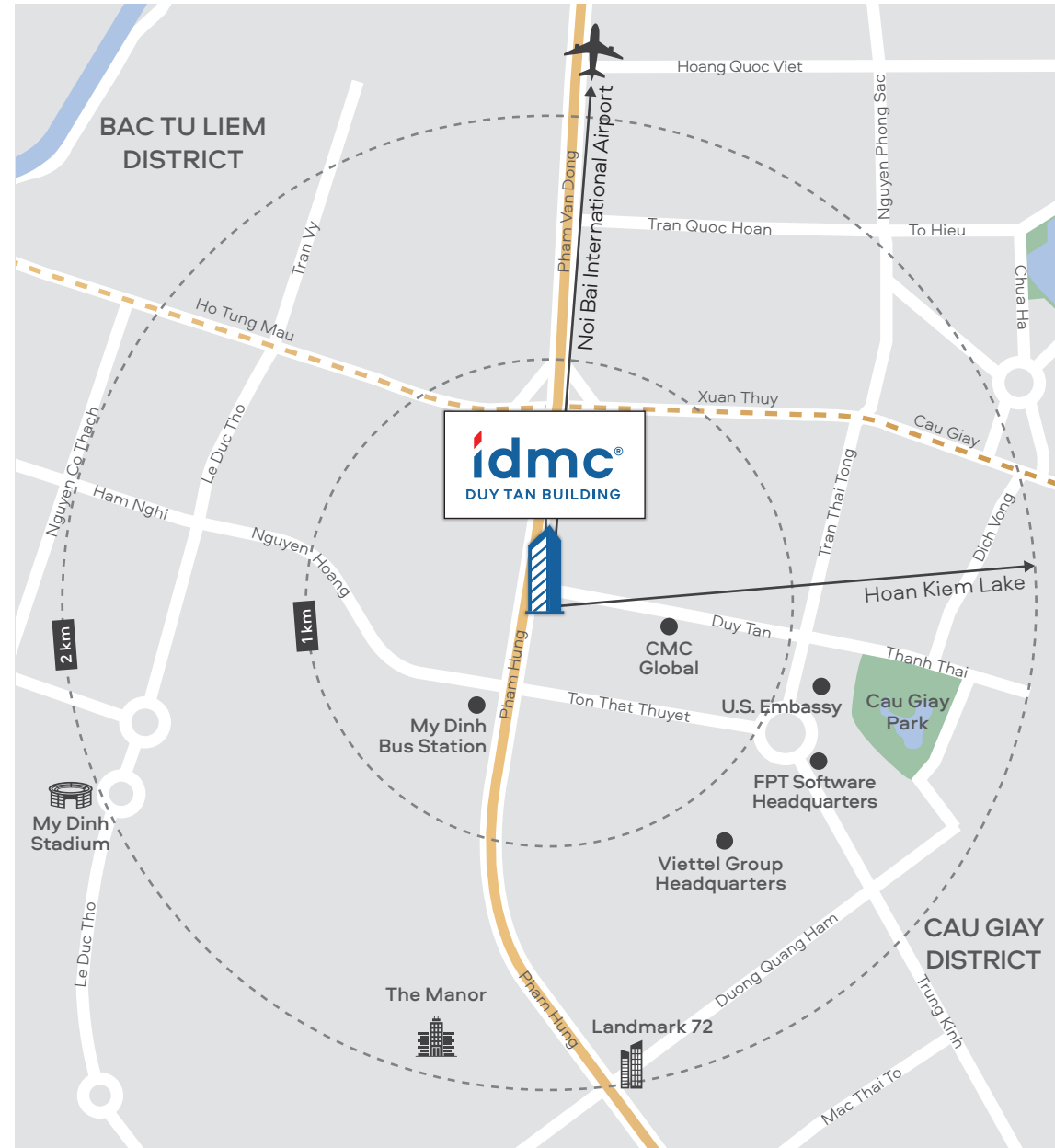
CMC Global	3'
My Dinh Bus Station	5'

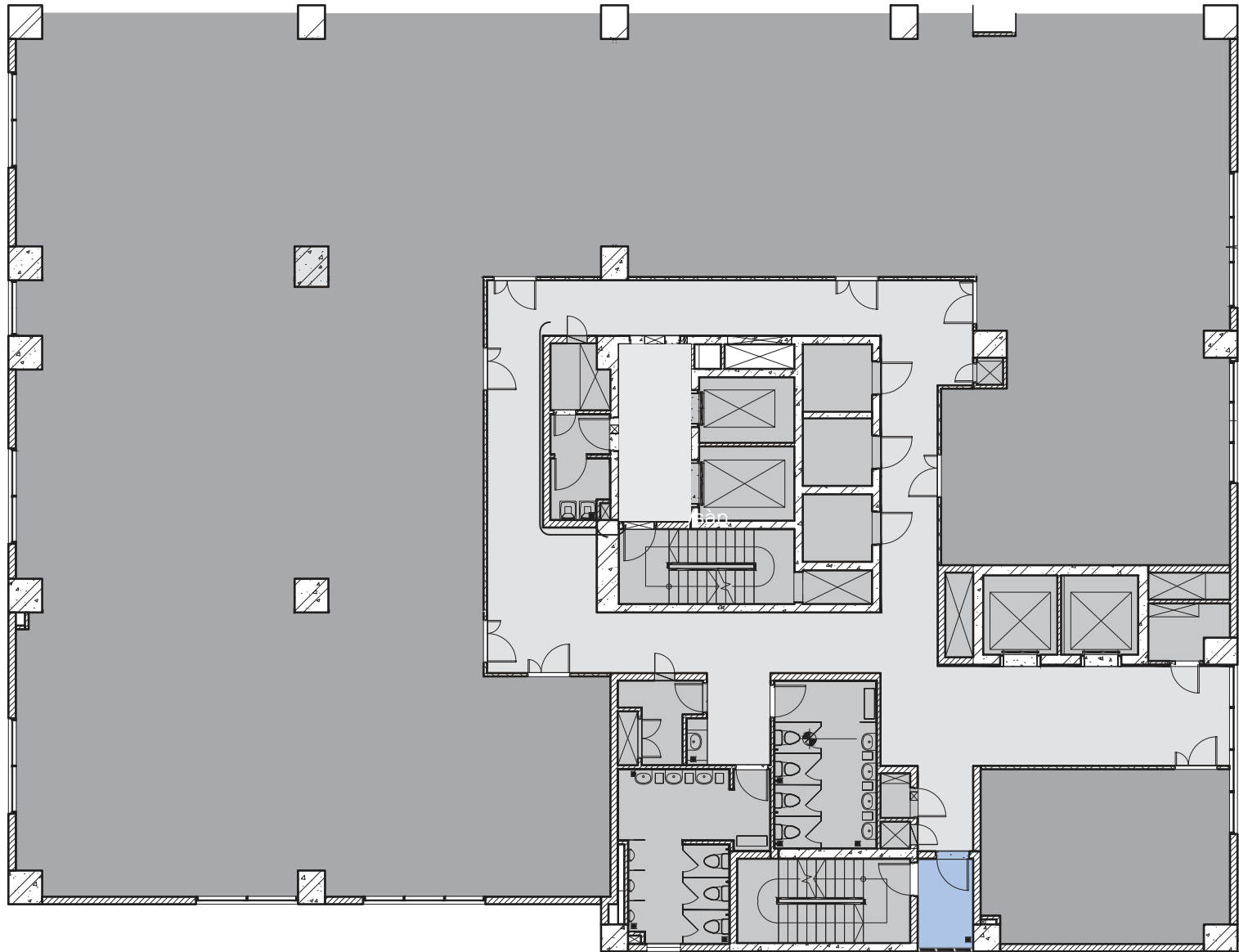
## DRIVING

Ring Road 3	1'
U.S. Embassy (coming soon)	4'
Viettel Group Headquarters	5'
FPT Software Headquarters	6'
Starlake	10'
West Lake	20'
Hoan Kiem Lake	30'
Noi Bai International Airport	30'

 Ring Road 3

 Metro Line 3





# TYPICAL FLOOR PLAN





2F - 8F

GFA

**952 sq m**

NLA

**655 sq m**

-  Office area
-  Common area
-  Lobby
-  Smoking area



(\*) GFA & NLA figures are estimated and subjected to change

# idmc | MY DINH 1

With floorplates averaging 2,578 sq m NLA, IDMC My Dinh 1 provides ample space for tenants to create bespoke office layouts that speak to their businesses. This flexibility in office design and furniture placement enhances productivity and employee satisfaction and caters to future expansion and growth.

## BUILDING SPECIFICATIONS

NLA	2,578 sq m/floor
LEVELS	6
CEILING HEIGHT	3 m
LIFTS	2 Mitsubishi passenger lifts 1 Schindler service lift

FIRE SAFETY	Qualified
VRV SYSTEM	VRV Daikin Center with Inverter technology
LIGHTING SYSTEM	Philips LED Panel









# idmc | MY DINH 2

IDMC My Dinh 2 is next to major arterial roads such as Ring Road 3, Pham Hung, and Pham Van Dong, which makes commuting effortless. With direct access to key economic, administrative, and technology hubs, occupiers can enjoy unparalleled conveniences that foster business growth.

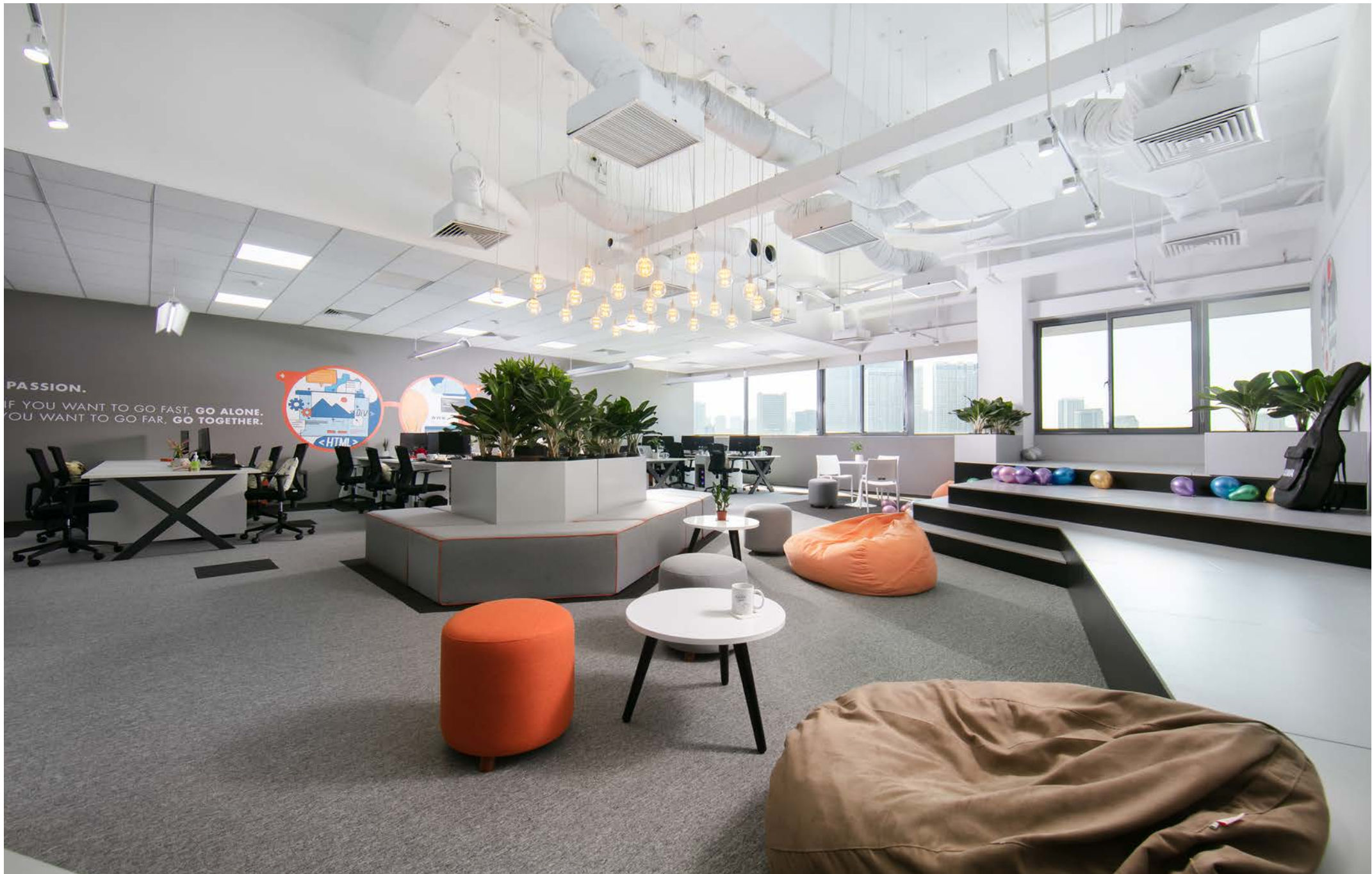
## BUILDING SPECIFICATIONS

NLA	663 sq m/floor
LEVELS	21
CEILING HEIGHT	2.7 m
LIFTS	4 Mitsubishi passenger lifts 1 Mitsubishi service lift 2 parking lifts
BASEMENT LEVELS (PARKING)	3 motorcycle parking levels 3 elevated car parking levels

FIRE SAFETY	Qualified
VRV SYSTEM	VRV Daikin Center with Inverter technology
LIGHTING SYSTEM	Philips LED Panel
FACADE GLASS	Double-layered Low-E
BUILDING MANAGEMENT SYSTEM	BMS
BACK-UP POWER	100%







PASSION.  
IF YOU WANT TO GO FAST, GO ALONE.  
IF YOU WANT TO GO FAR, GO TOGETHER.



# CONNECTIVITY

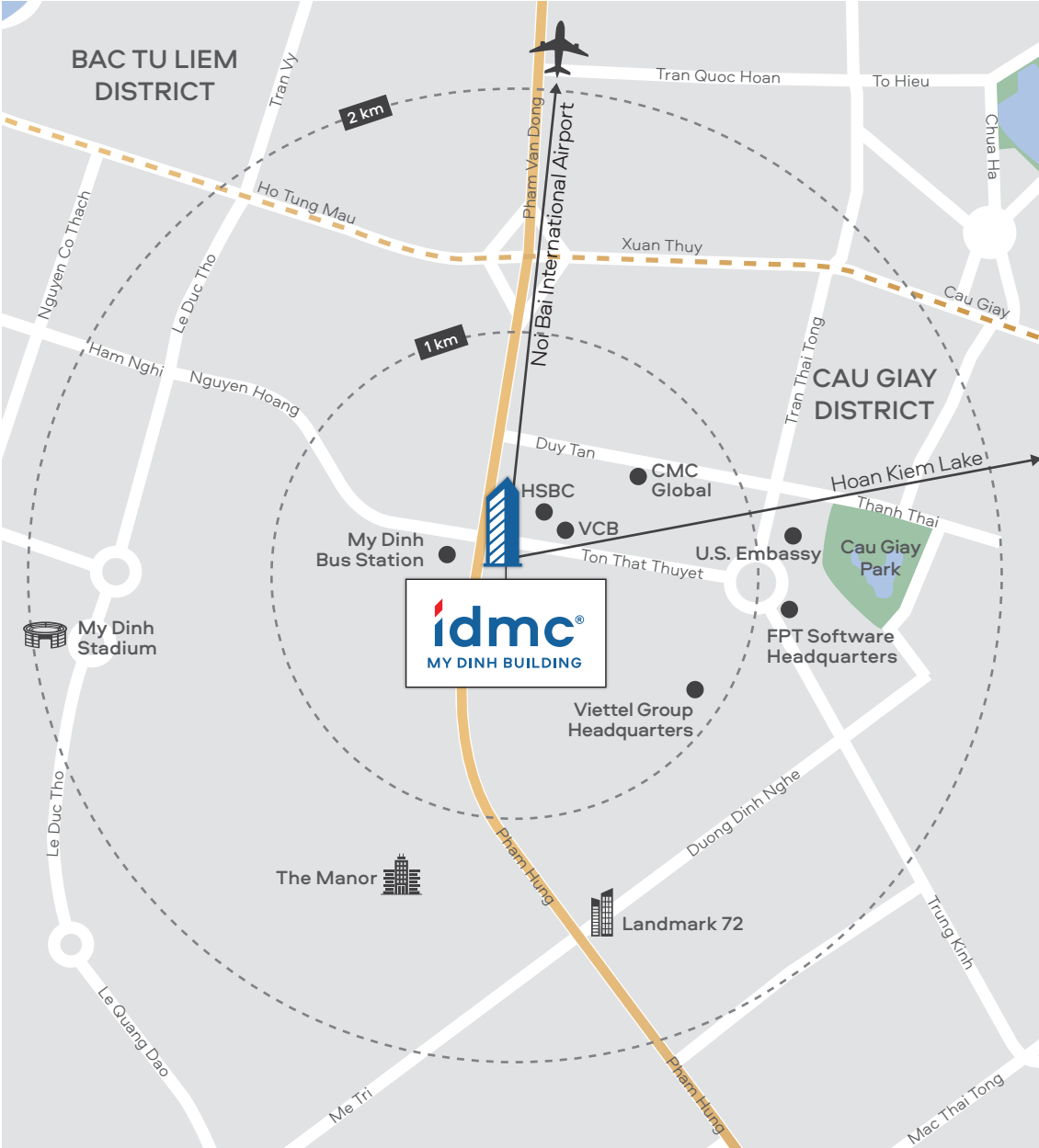
**WALKING**

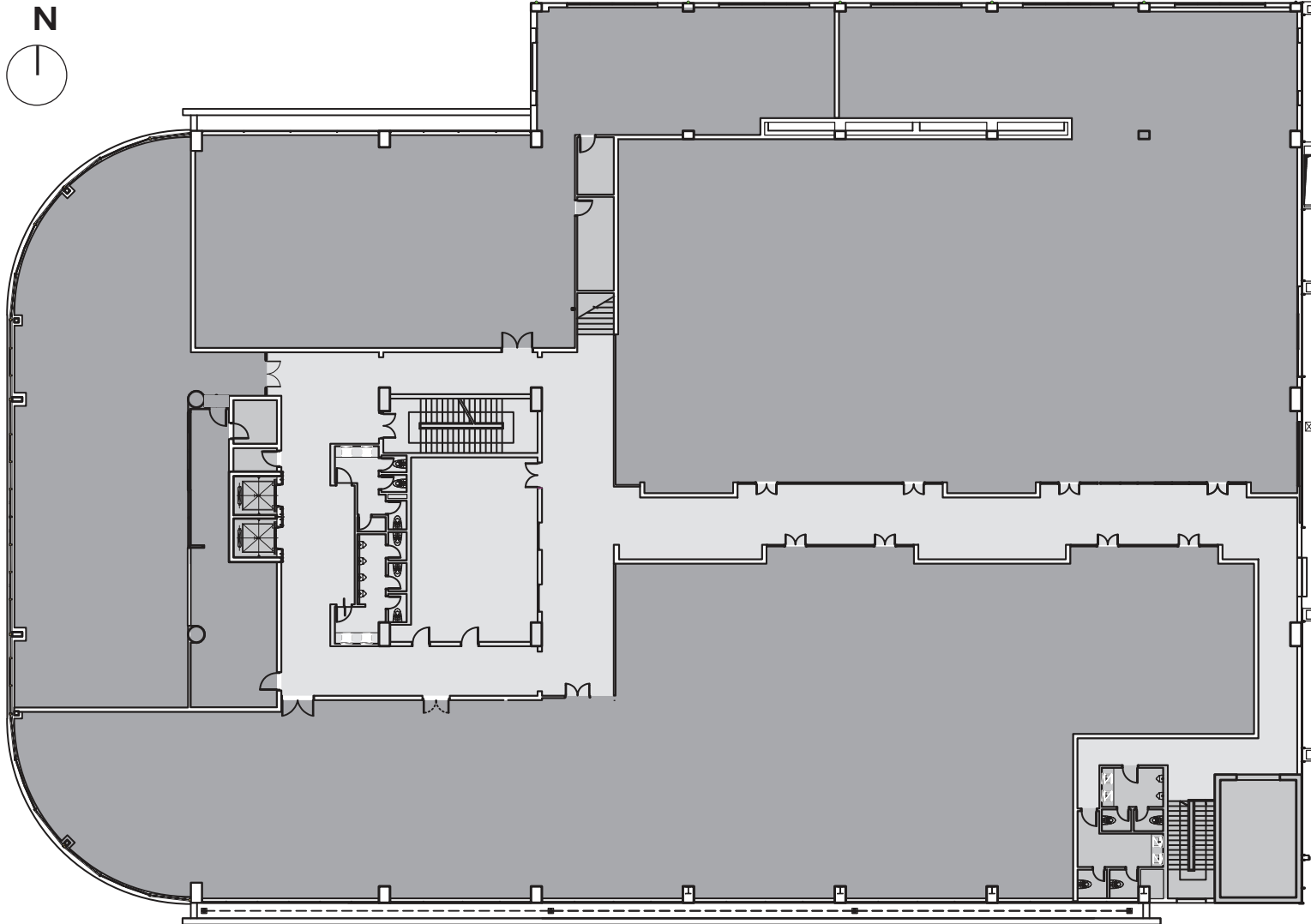
HSBC	1'
Vietcombank	1'
My Dinh Bus Station	3'

**DRIVING**

Ring road 3	1'
CMC Global	4'
Viettel Group Headquarters	5'
FPT Software Headquarters	6'
Starlake	15'
Samsung R&D Centre	15'
Embassy of the Republic of Korea	15'
West Lake	25'
Hoan Kiem Lake	30'
Noi Bai International Airport	30'

-  Ring road 3
-  Metro Line 3





# TYPICAL FLOOR PLAN

**6F**

(MY DINH 1)

GFA

**3,249 sq m**

NLA

**2,578 sq m**

- Office area
- Common area
- Lobby

(\*) GFA & NLA figures are estimated and subjected to change







**16F**

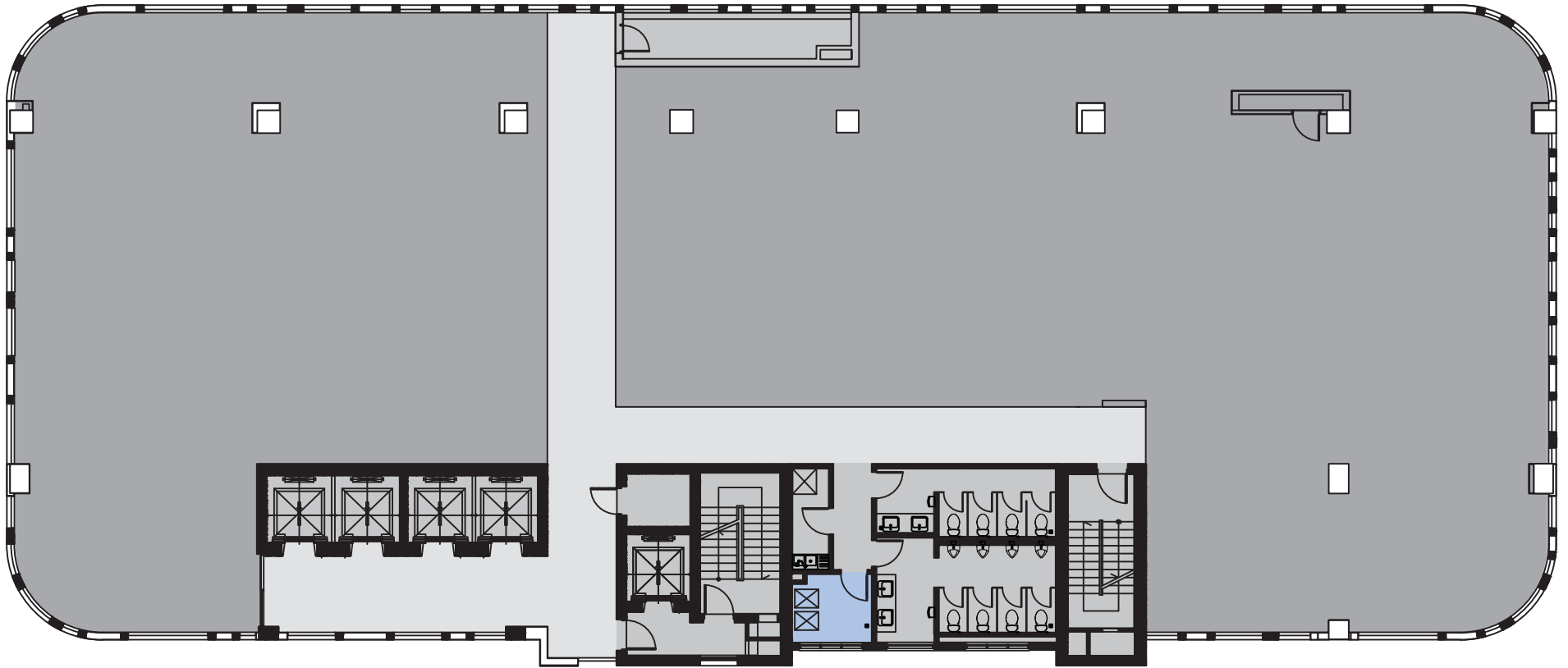
GFA **897 sq m**

NLA **663 sq m**

# TYPICAL FLOOR PLAN

(MY DINH 2)

-  Office area
-  Common area
-  Lobby
-  Smoking area



IDMC MY DINH 2

(\*) GFA & NLA figures are estimated and subjected to change

# idmc | LANG HA

With its strategic location in a prominent financial centre, IDMC Lang Ha means occupiers have good access to business partners and financial support systems. The signature green building also delivers energy-saving equipment, which helps occupiers to optimise operational costs and achieve ESG goals.

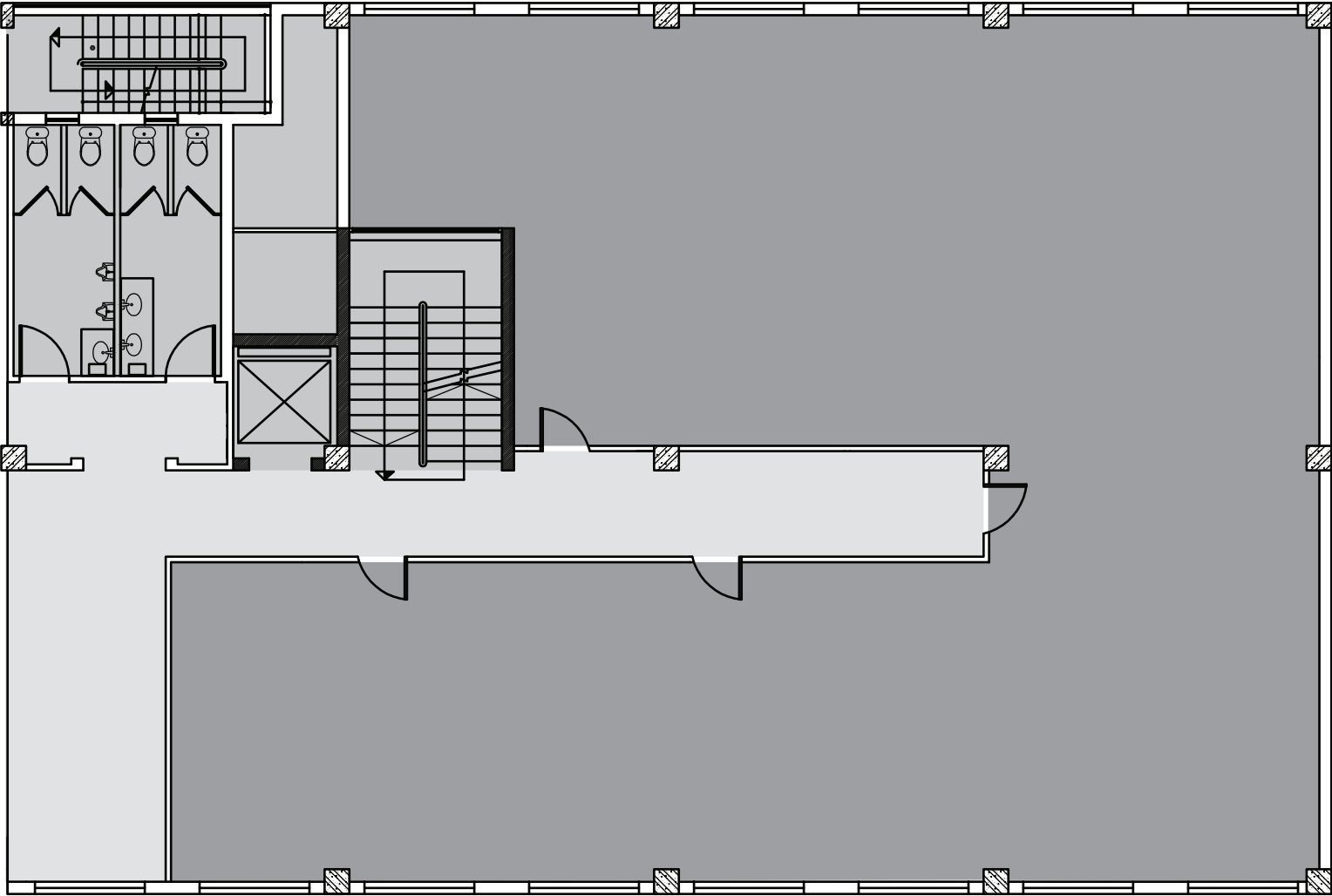
## BUILDING SPECIFICATIONS

NLA	10-level building: 480 sq m/floor   6-level building: 280 sq m/floor
LEVELS	10 + 6
CEILING HEIGHT	3.2 m
LIFTS	10-level building: 2 Otis passenger lifts 6-level building: 1 Otis passenger lift
FIRE SAFETY	Qualified
VRV SYSTEM	VRV Daikin System, General System
LIGHTING SYSTEM	Philips LED Panel









# TYPICAL FLOOR PLAN

## 6-LEVEL BUILDING

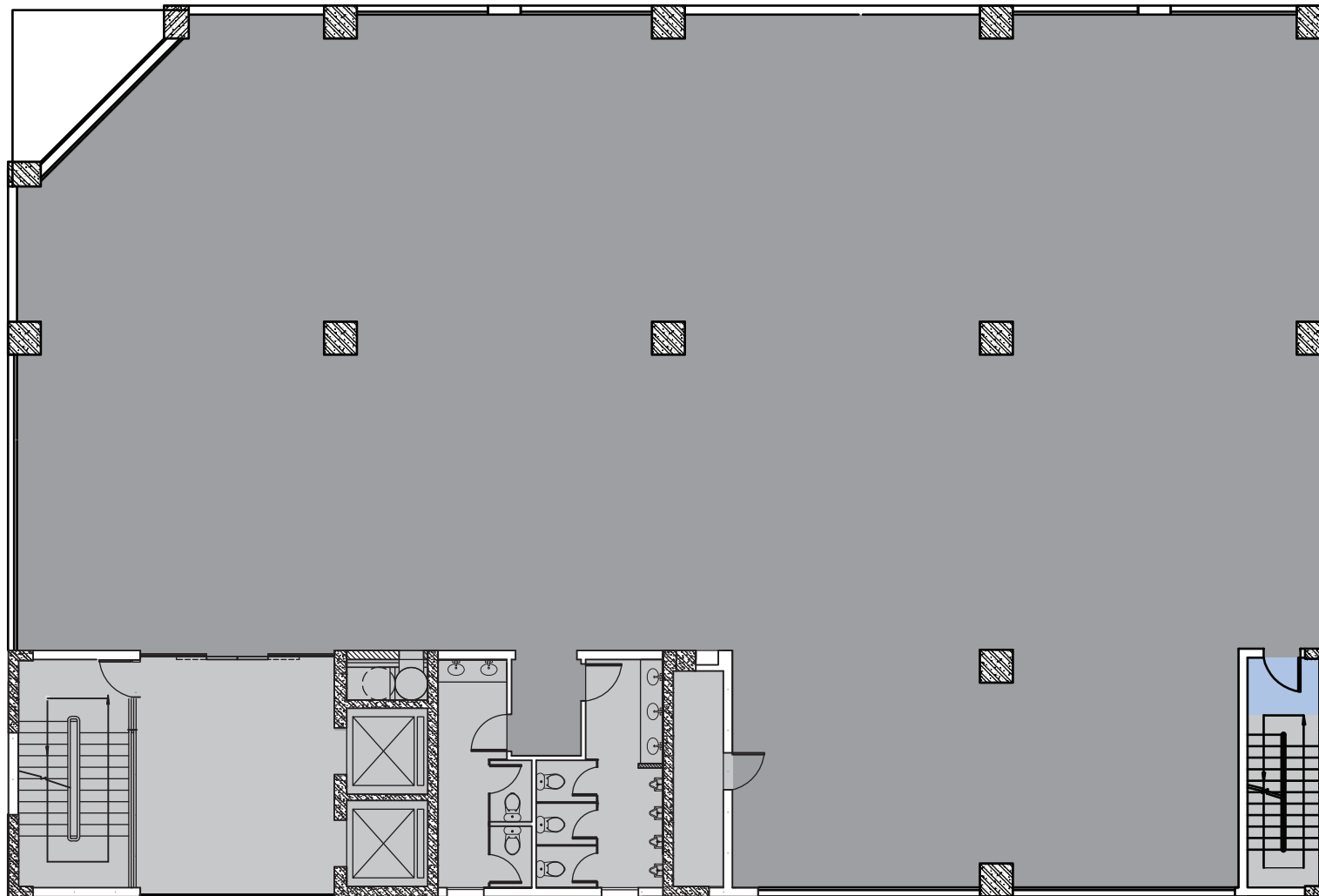
GFA  
**394 sq m**

| 6AF |  
NLA  
**280 sq m**

- Office area
- Common area
- Lobby



(\*) GFA & NLA figures are estimated and subjected to change



# TYPICAL FLOOR PLAN

## 10-LEVEL BUILDING




GFA

**663 sq m**

| 8F |

NLA

**480 sq m**

-  Office area
-  Common area
-  Smoking area



(\*) GFA & NLA figures are estimated and subjected to change

# idmc | TAY HO

Located in the new administrative centre of Ha Noi, IDMC Tay Ho is close to major government offices, financial institutions, and business centres, which allows for seamless business operations. It also has access to public transport links, which deliver convenient connections to other parts of the city.

## BUILDING SPECIFICATIONS

NLA	200 sq m/floor
LEVELS	8
CEILING HEIGHT	3 m
LIFTS	4 Mitsubishi passenger lifts
FIRE SAFETY	Qualified
VRV SYSTEM	Chiller
LIGHTING SYSTEM	Philips LED Panel







# CONNECTIVITY

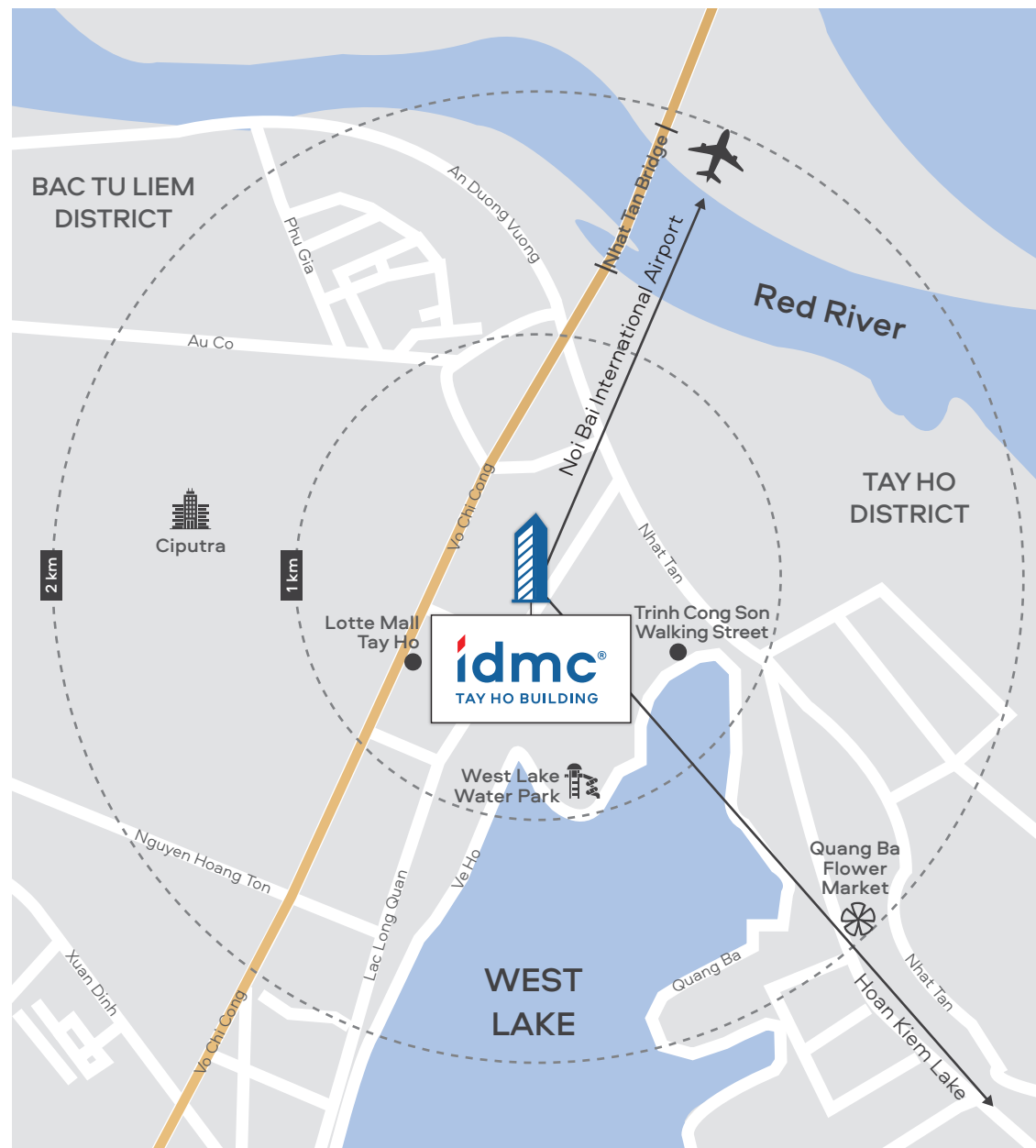
## WALKING

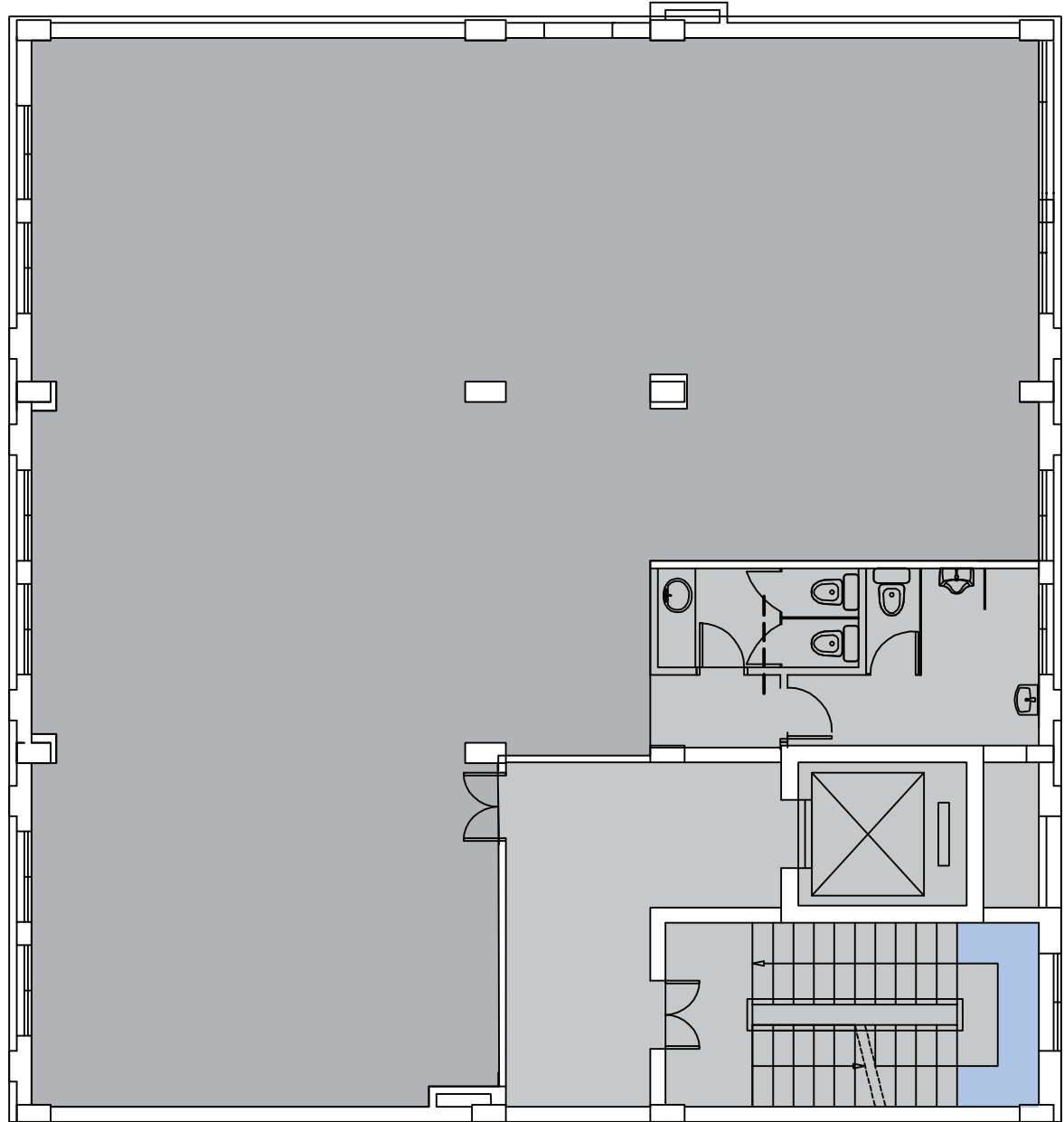
Lotte Mall Tay Ho	5'
West Lake	7'
Trinh Cong Son Walking Street	8'

## DRIVING

Ring road 2	1'
Ciputra	8'
Starlake	10'
Ministry of Industry and Trade	15'
Ministry of Finance	17'
State Bank of Viet Nam	20'
Hoan Kiem Lake	20'
Noi Bai International Airport	20'

 Ring road 2





# TYPICAL FLOOR PLAN

4F

GFA

230 sq m

NLA

200 sq m

- Office area
- Common area
- Smoking area

(\*) GFA & NLA figures are estimated and subjected to change





# idmc | HOAN KIEM

IDMC Hoan Kiem is in the centre of Ha Noi's commercial district with access to diverse services and proximity to banking and financial institutions, government agencies, and international organisations. Retail or commercial occupiers also benefit from the building's corner position, which boosts footfall and flexibility.

## BUILDING SPECIFICATIONS

NLA	233 sq m/floor
LEVELS	7
CEILING HEIGHT	3 m
LIFTS	2 Otis passenger lifts
FIRE SAFETY	Qualified
VRV SYSTEM	VRV Daikin Center with Inverter technology
LIGHTING SYSTEM	Philips LED Panel
FACADE GLASS	Double-layered Low-E







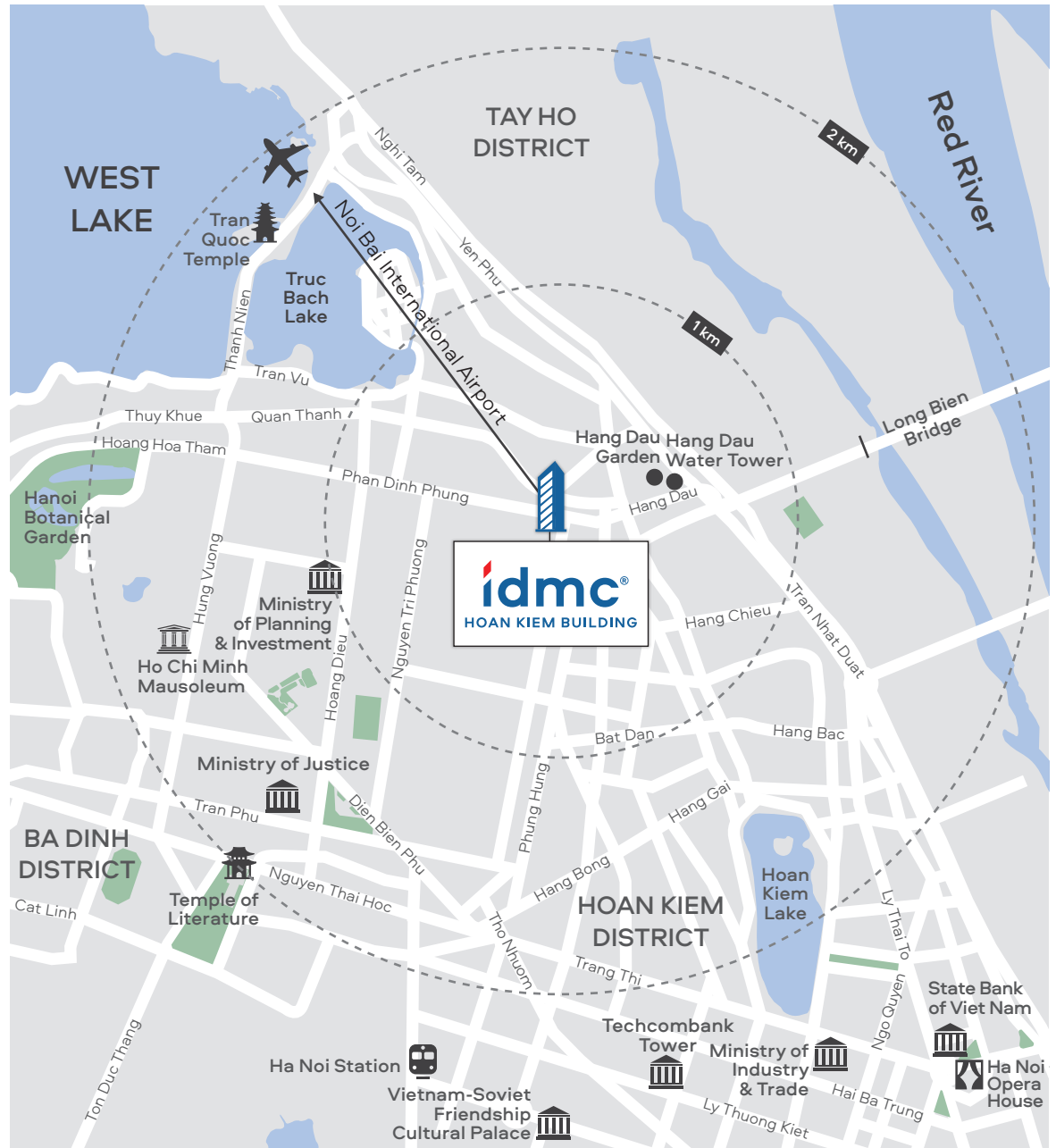
# CONNECTIVITY

## WALKING

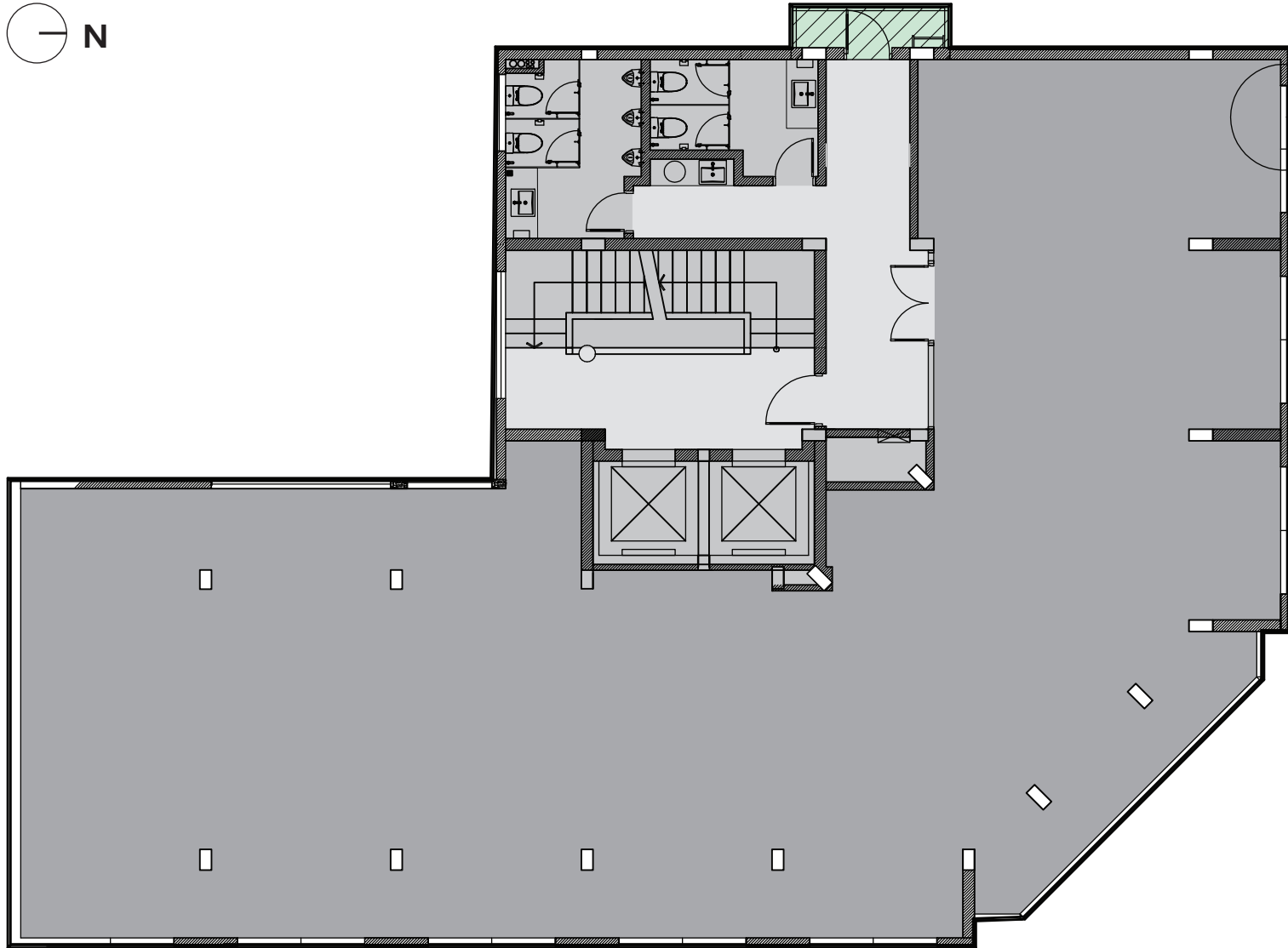
Hang Dau Water Tower	2'
Hang Dau Garden	2'
Phung Hung Mural Street	5'

## DRIVING

Ha Noi Botanical Garden	7'
Ha Noi Old Quarter	10'
Ha Noi Railway Station	10'
West Lake	10'
Hoan Kiem Lake	10'
Ministry of Industry and Trade	10'
State Bank of Viet Nam	15'
Ministry of Finance	15'
Noi Bai International Airport	35'







# TYPICAL FLOOR PLAN





2F - 5F

GFA

303 sq m

NLA

233 sq m

-  Office area
-  Common area
-  Lobby
-  Balcony

*(\*) GFA & NLA figures are estimated and subjected to change*



**idmc**  
DUY TAN BUILDING

**ELEVATE YOUR WORKSPACE  
WITH OUR PROFESSIONAL TOUCH**

# ABOUT DEVELOPER

IDMC is a leading investment and development company with a diverse portfolio in office real estate, automobile dealership, and passenger transportation.

With over 2,000 employees and extensive experience, IDMC provides high-quality, comprehensive solutions and properties that meet international standards. IDMC is a notable office developer and has hotels and F&B properties. It delivers premium workspaces with high-end amenities and value-added, bespoke services. With a reputation for excellence, IDMC is a trusted partner for leading international and Vietnamese businesses.





# LEASING INFORMATION



INVESTMENT AND  
DEVELOPMENT MANAGEMENT  
JOINT STOCK COMPANY

 0912 019 686

 [sales@idmc.com.vn](mailto:sales@idmc.com.vn)

 [idmc.com.vn](http://idmc.com.vn)



**idmc**<sup>®</sup>  
BUILDING